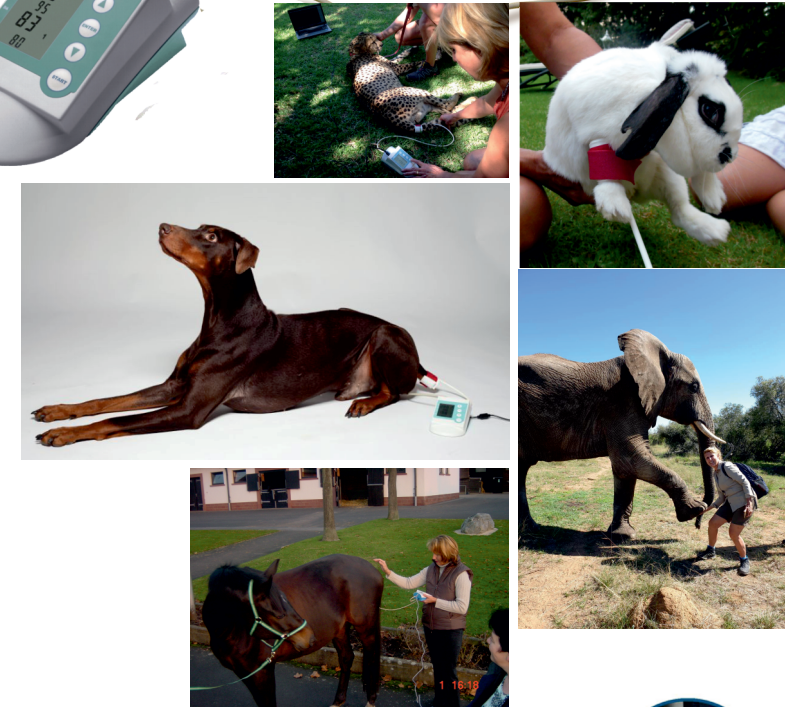
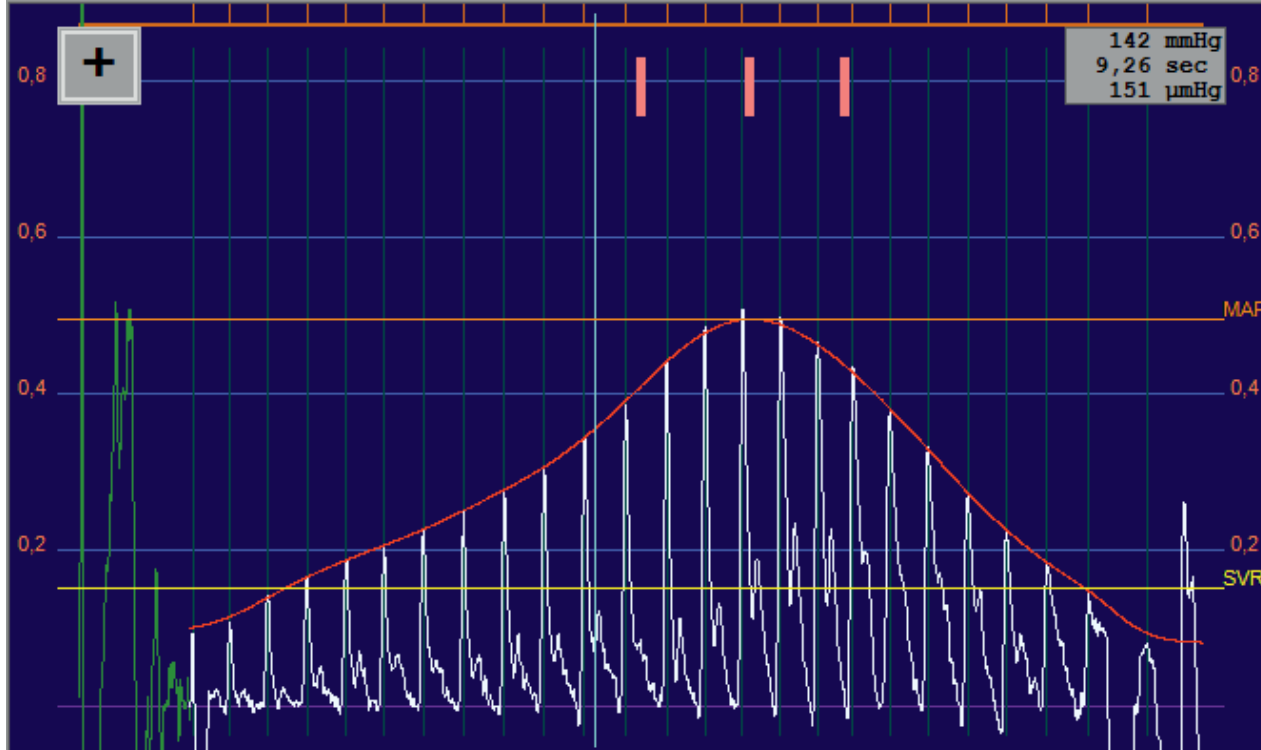
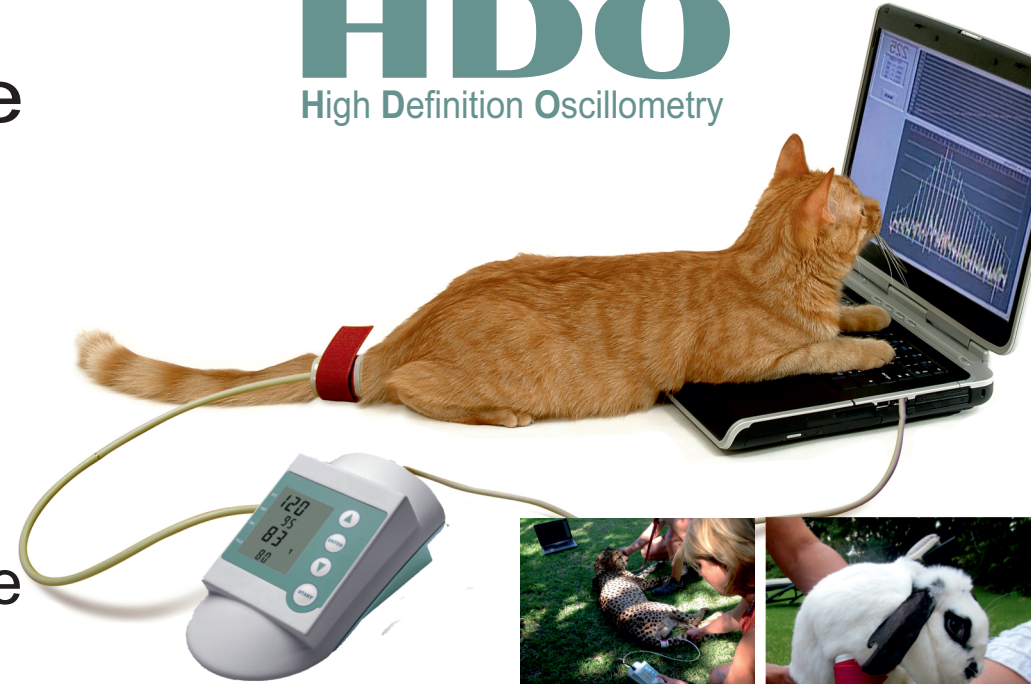
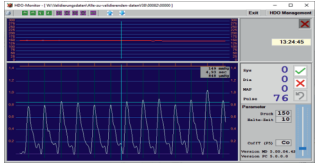


MDSWIN - Analyse - Software

manual- us V 5.0

HDO[®]
High Definition Oscillometry

- ◆ Constant reading
- ◆ Amplituden pressure
- ◆ PWA puls wave analyse

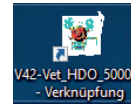


VET HDO MONITOR MD PRO 5.0-1/23 us



PREPARING TO TAKE A READING Monitor Set up:

Parameter setting						
Firmware	P-max	P-min	Deflation	Cuff	Position Cuff	Cuff detection
Cat	175-300	15-45	6-15	C1	tail	on
preset	225	25	12	C1	front limb	on
Dog	175-300	15-30	6.14	D1	tail	on
preset	225	25	9	D1	front limb	on
Dog	150-300	25-50	03.12.	D2	front limb	on
preset	225	25	6	D2		on
Constant	50-225	10-120	time			
preset	100	10	time	steps		
Pulspressure	175-275	25-75	10-20	10-25		
preset	175	25	10	25		



aktivat



Sleep



no connection



- ▶ Start MDSWIN Analyse
- ▶ Turn on the HDO
- ▶ Wake up HDO press START
- ▶ Connect appropriate cuff by inserting the tube into „quick connector“ socket on rear machine
- ▶ Connect the USB cable or aktivat Bluetooth and check connection status

Auto ▶ The HDO will automatically calibrate for subsequent measurements during the first measurement with start up a **CO** measurement, special in Cat is it recommended!

CO : constant reading which hold the pressure for a time on the same level of mmHg

PS : hold constant the pressure for a time and drop down in steps

CuffT

- Co
- C1
- D1
- D2
- Co
- PS

Loop t

P mmHg 100

Time 10

Parameter

Druck 125

Halte-Zeit 10

CuffT (P5) Co

Version MD 5.00.04.42

Version PC 5.0.0.0

Sys 0

Dia 0

MAP 0

Pulse 75

Parameter

Druck 125

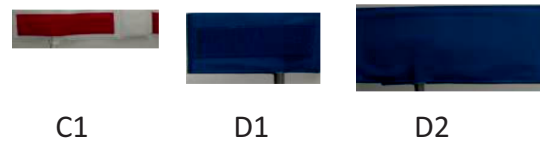
Halte-Zeit 10

CuffT (P5) Co

Version MD 5.00.04.42

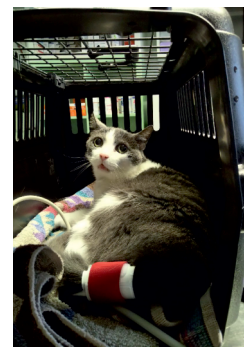
Version PC 5.0.0.0

- ▶ Wrap the cuff around the tail, ensuring that the tube is aligned over the top the artery's position
- ▶ Front limb median
- ▶ Hind limb sisteral saphonous
- ▶ Tail coccygeal for for tail



Note:

- ▶ The cuff should be snug, but not tied
- ▶ After placing the cuff, allow the animal to calm prior before
- ▶ On limb do not allow animal to place pressure on



MD Parameter

Parameter

CuffT C1 P-Max 225

P-Min 25

Loop t 0 mmHg/s 12

Loop n 1

Auto

Sleep SD card 11

Pro

Firmware 5.00.04.42

Select cuff typ

Selection to inflate up to mmHg
 Selection to drain to mmHg
 Deflation rate of up mmHg / sec

Loop T: Start measuring interval in minutes

Loop N: Numbers of samples per interval

SD card:Numbers of stored readings.
 Delete the readings trashbox

◆ AUTO After the first measurement CO the parameters are optimized for the test subjects. Pmax Pmin mm/s Gain

◆ Sleep: modus aktivated or deactivated

Battery status

Start / Stop